

Ultron® ES Chiral Columns

Ultron® ES-CD Ultron® ES-PhCD

- Cyclodextrin-based chiral HPLC phases for better performance
- For the enantiomeric separation of hydrophobic cyclic compounds
- Mobile phase of both reversed phase and normal phase can be used.
- Excellent stability and durability

Ultron ES-CD and Ultron ES-PhCD are chemically bonded with β -cyclodextrin (CD) and phenylcarbamated β -cyclodextrin (PhCD), respectively.

Typical applications include acidic and basic pharmaceuticals, pesticides and organic compounds.

HPLC Columns

Specifications	
Support	Spherical Silica
Particle Size (μm)	5
Pore Diameter (\AA)	120
Chiral Stationary phase	β -cyclodextrin Phenylcarbamated β -cyclodextrin
USP	L-45

Ordering Information				
Phase	Particle Size (μm)	I.D. Length (mm)	QTY	Part No.
Ultron ES-CD, ES-pHCD Chiral Columns				
ES-CD	5	2.1 x 150	1	03S16-B421
		4.6 x 150	1	03S16-E421
		6.0 x 150	1	03S16-F421
ES-PhCD	5	2.1 x 150	1	03S17-B421
		4.6 x 150	1	03S17-E421
		6.0 x 150	1	03S17-F421

Ordering Information				
Phase	Particle Size (μm)	I.D. Length (mm)	QTY	Part No.
Ultron ES-CD, ES-pHCD Chiral Guard Columns				
ES-CD	5	4.0 x 10	1	03S16-D121
ES-PhCD	5	4.0 x 10	1	03S17-D121
Ultron ES-CD, ES-pHCD Chiral Guard Cartridge*				
ES-CD	5	2.1 x 5	2	03S16-BF23
		4.6 x 10	2	03S16-E123
ES-PhCD	5	2.1 x 5	2	03S17-BF23
		4.6 x 10	2	03S17-E123

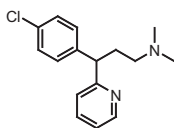
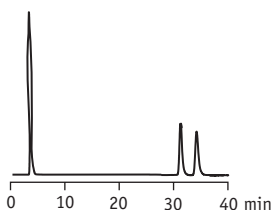
*Guard holder required

Ordering Information		
Description	QTY	Part No.
Guard Holder with Coupler		
For column I.D. 2.1-7.8 mm	1	0300-0001



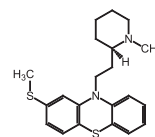
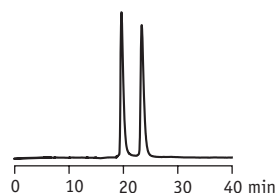
Ultron® ES Chiral Columns

Chlorpheniramine



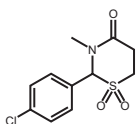
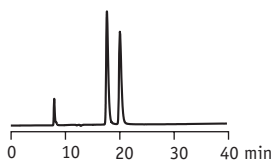
Column: Ultron ES-CD 3µm, 6.0 x 150mm
Mobile Phase: 20mM KH₂PO₄ (pH5.0)/CH₃CN (83/17)
Flow Rate: 1.0mL/min
Column Temp: 15 °C
Detection: UV 220nm

Thioridazine



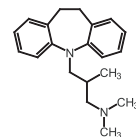
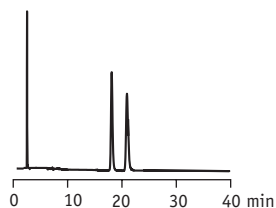
Column: Ultron ES-CD 3µm, 6.0 x 150mm
Mobile Phase: 20mM KH₂PO₄ (pH4.6)/CH₃CN (75/25)
Flow Rate: 1.2mL/min
Column Temp: 25 °C
Detection: UV 220nm

Chlormezanone



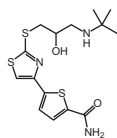
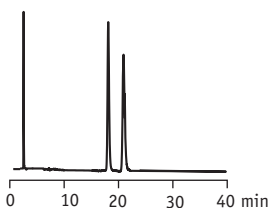
Column: Ultron ES-CD 3µm, 6.0 x 150mm
Mobile Phase: 20mM KH₂PO₄ (pH4.6)/CH₃CN (93/7)
Flow Rate: 1.2mL/min
Column Temp: 25 °C
Detection: UV 220nm

Trimipramin



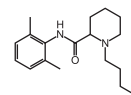
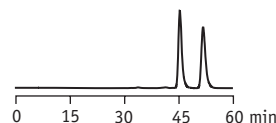
Column: Ultron ES-CD 3µm, 6.0 x 150mm
Mobile Phase: 20mM KH₂PO₄ (pH4.6)/CH₃CN (75/25)
Flow Rate: 1.2mL/min
Column Temp: 25 °C
Detection: UV 220nm

Arotinolol



Column: Ultron ES-PhCD 3µm, 6.0 x 150mm
Mobile Phase: 20mM KH₂PO₄ (pH4.6)/CH₃CN (80/20)
Flow Rate: 1.2mL/min
Column Temp: 25 °C
Detection: UV 220nm

Bupivacaine



Column: Ultron ES-PhCD 3µm, 6.0 x 150mm
Mobile Phase: 20mM KH₂PO₄ (pH4.6)/CH₃CN (80/20)
Flow Rate: 1.2mL/min
Column Temp: 25 °C
Detection: UV 220nm